

NOTAM and Flight Analysis for Thursday, July 15, 2021

Weber State University HARBOR Balloon Flight HAR210715

Flight Simulations Current as of 11:00 MDT (UTC-0600) Tuesday July 13, 2021

1. For: High altitude sounding balloon – High Altitude Balloon
2. Launch Time: 08:00 - 14:00 MDT (14:00 - 20:00 Z)
3. Launching from: U69, r270/012nm, magnetic, from MTU
4. Cruising Altitude: 20,000 feet
5. Time to reach 60,000 feet MSL: 55 minutes after launch.
6. Balloon Diameter: 5.5 feet
  1. Length of suspension lines: 40 ft, total length: 60 ft
  2. Payload weight: 9.7 lbs (~6 modules each < 3.9 lbs and less than 3 oz/in<sup>2</sup>)
  3. Helium fill, 3000-3500 PSI, 400 cubic feet
  4. No trailing antenna
7. Estimated time of impact: 10:00 - 17:00 MDT (16:00 - 23:00 Z)
8. Estimated location of impact: 13 nautical miles E (100° magnetic) of Launch
  1. Location from MTU VOR: r170/2nm (magnetic),
9. Predicted direction of flight: 100 degrees (magnetic) = EB
10. Predicted distance to be traveled: 15 statute miles, 13 nautical miles
11. My information - name: John SOHL
12. My information - Institution: Weber State University
13. My information - Cell phone number: 801-476-0589
14. Current Flight Status - <http://harbor.weber.edu>

Details emailed to ZLC Airspace Office ([ANM-ZLC-Airspace@faa.gov](mailto:ANM-ZLC-Airspace@faa.gov)), Marnie Escandon (FAA), Abel Mkina (WSU Risk Management)

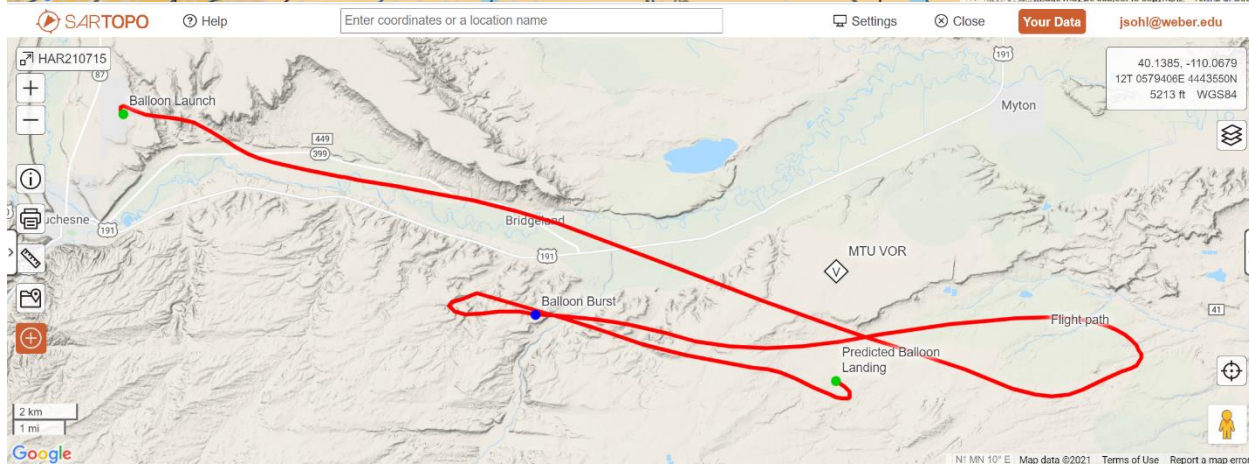
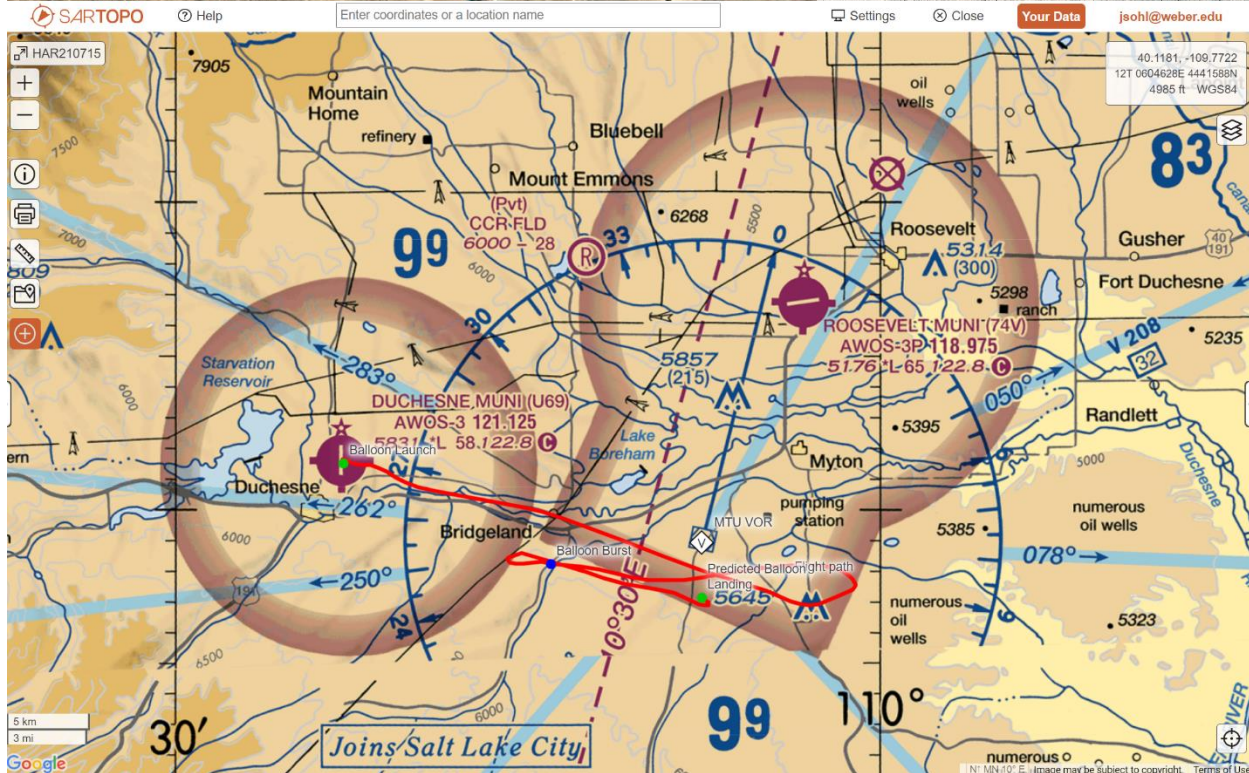
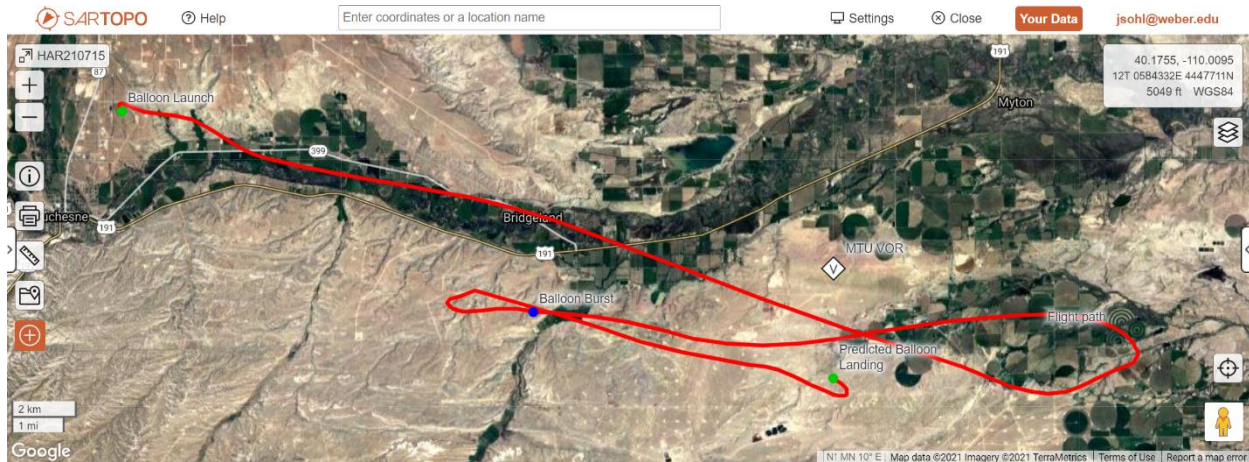
FAA Contact during flight: 801-320-2562 & 801-320-2563

NOTAM: NOTAM operator initials = AL 07/045

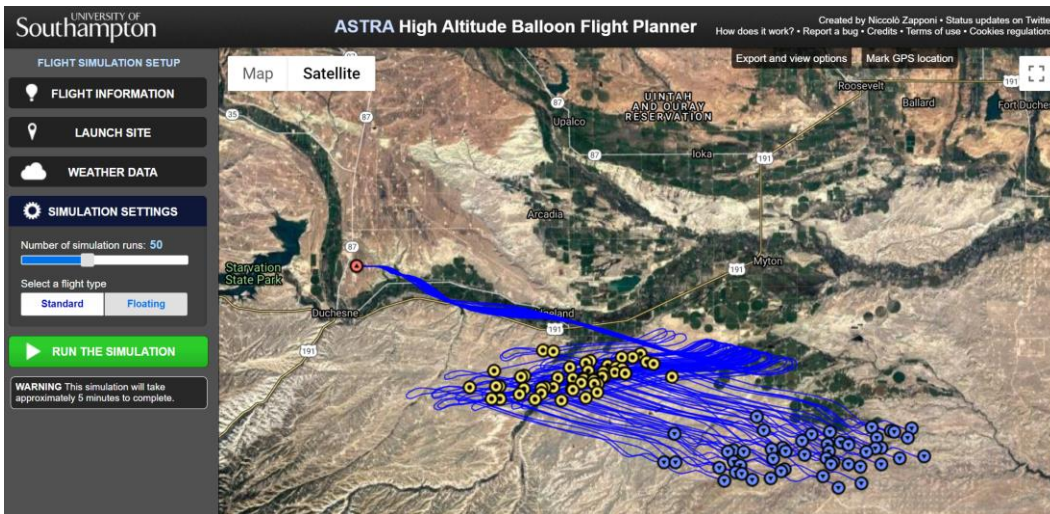
**MTU-VOR/DME**

!CDC 07/045 MTU AIRSPACE UNMANNED FREE BALLOON MTU270012 SFC-UNL EB TO 100000FT 2107151400-2107152300

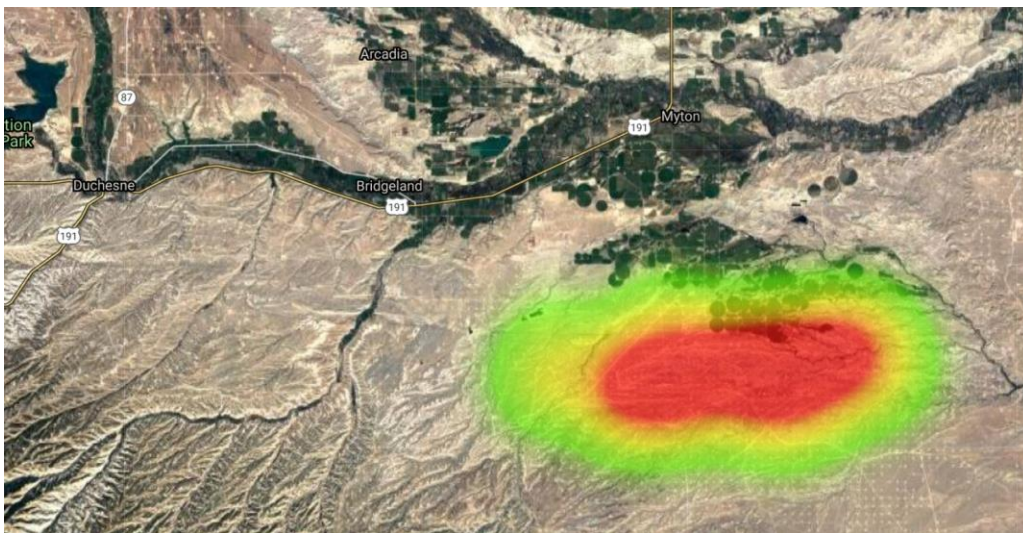
# CUSF Flight Predictions made 11:00 a.m. July 13, 2021



50 simulation runs with the South Hampton predictor:



As a heat map for landing:



NOAA (Jordan Allen) predictor:

