

NOTAM for April 19, 2014

Weber State University HARBOR Balloon Flight HAR140419

Flight Simulations Current as of 6:05:00 MDT (GMT-0600) Friday APR 18, 2014

1. For: High altitude sounding balloon - HiBal.
2. Balloon Flight Track Monitoring via Internet:  
<http://aprs.fi/?call=KF7WII> -or- <http://aprs.fi/?call=WB1SAR>
3. Launch Time: 09:00 - 14:00 LT (15:00 - 20:00 Z)
4. Launching from: Duchesne Municipal (U69) Airport
5. Cruising Altitude: 90,000 feet
6. Time to reach 60,000 feet MSL: 55 minutes after launch.
7. Balloon Diameter: 5.5 feet
  1. Length of suspension lines: 20 ft
  2. Payload weight: 12 lbs (5 modules < 3.0 lbs each plus cutdown system (0.5 lb) and parachute)
  3. Helium fill, 3000-3500 PSI, 300 cubic feet
  4. No trailing antenna
8. Flight Duration: ~100 minutes
9. Estimated time of impact: 10:00 - 16:00 LT (16:00 - 22:00 Z)
10. Estimated locations of impact: Between Duchesne and the mountains north of Vernal, UT.
  1. Location from closest VOR: approximately 55 miles from Myton VOR on 032 radial
11. Predicted direction of flight: 44 degrees - NE
12. Predicted distance to be traveled: 61 miles
13. My information - name: John SOHL
14. My information - Institution: Weber State University
15. My information - Cell phone number: 801-476-0589
16. Current Flight Status - <http://planet.weber.edu/HARBOR/FlightStatus.htm>

NOTAM (877) 487-6867

Salt Lake FAA Center 801-320-2565/2562

Details emailed to: Harris Hartzell ([Harold.CTR.Hartzell@faa.gov](mailto:Harold.CTR.Hartzell@faa.gov) )

and Dwain Klein ([dwain.b.klein@FAA.gov](mailto:dwain.b.klein@FAA.gov))

Contact during flight: FAA Mission Control 801-320-2562

I have submitted a NOTAM for Saturday covering the area north and east of U69 in the Uintah Basin.

It was recorded by JE.

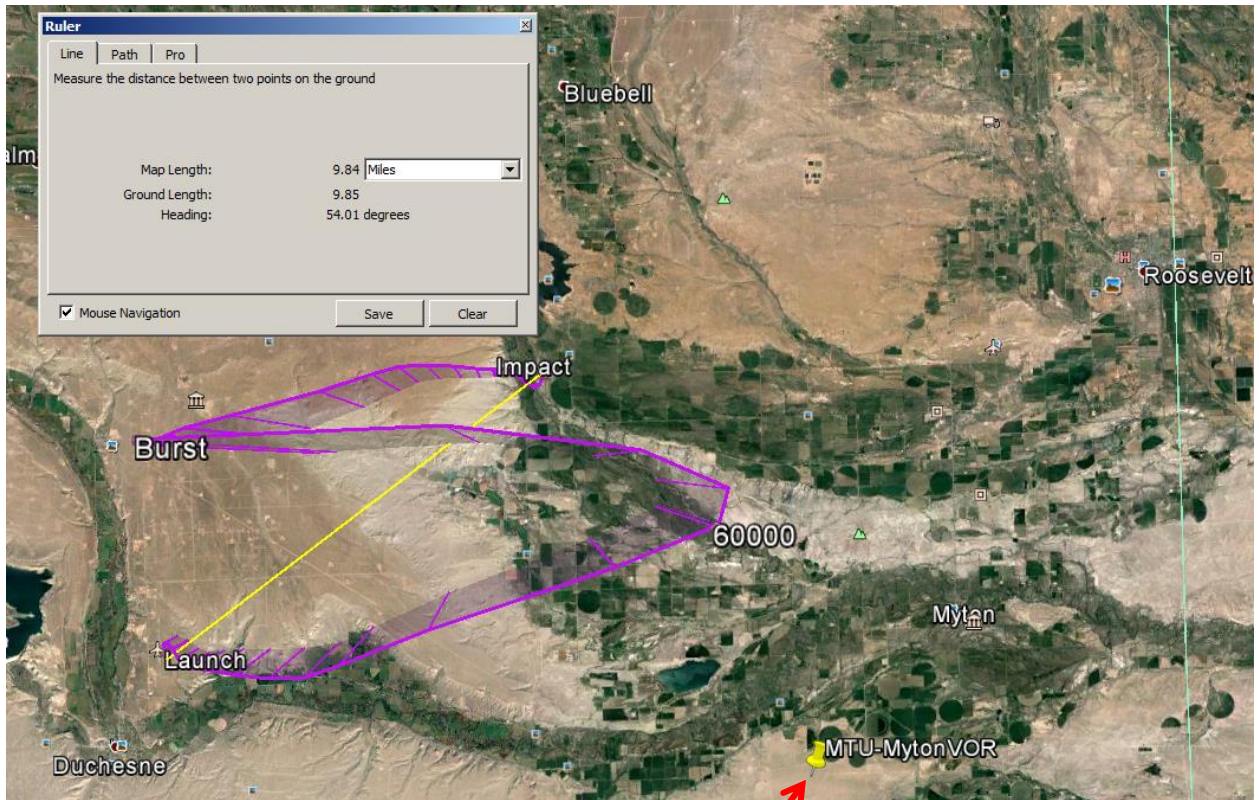
#### **U69 DUCHESNE MUNI**

!CDC **04/063** U69 AIRSPACE HIGH ALT BALLOON MTU282014.3 SFC-FL600 NORTHEASTBOUND  
1404191500-1404192200

(NOTE: This was the most bizarre interview I've ever had for submitting a NOTAM.)

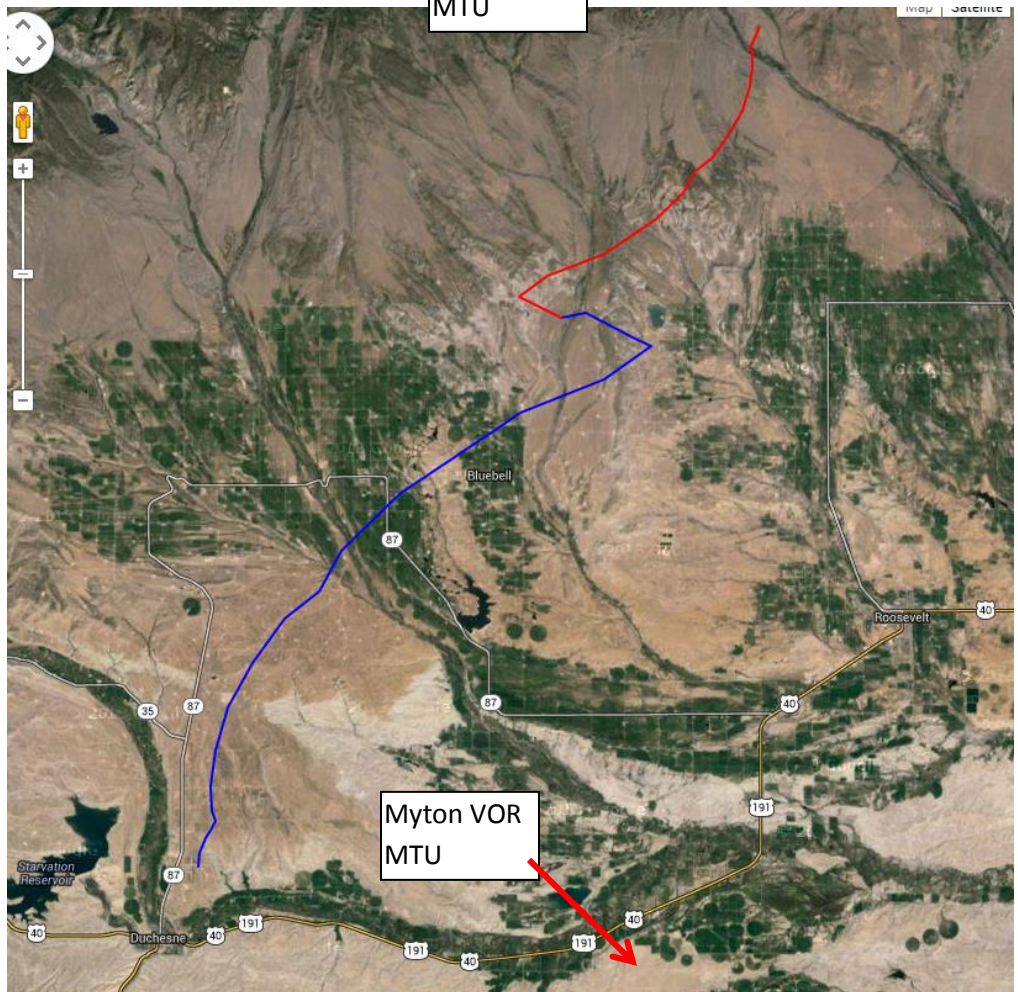
Below are four different methods of predicting the flight. The flight tracks vary based on the day and forecasting methods. The four flight predictor software packages are using two different NOAA winds aloft models. The resulting differences in flight path are fairly remarkable. We are hoping for the short paths.

University of Wyoming Atmospheric Sciences Prediction Software:



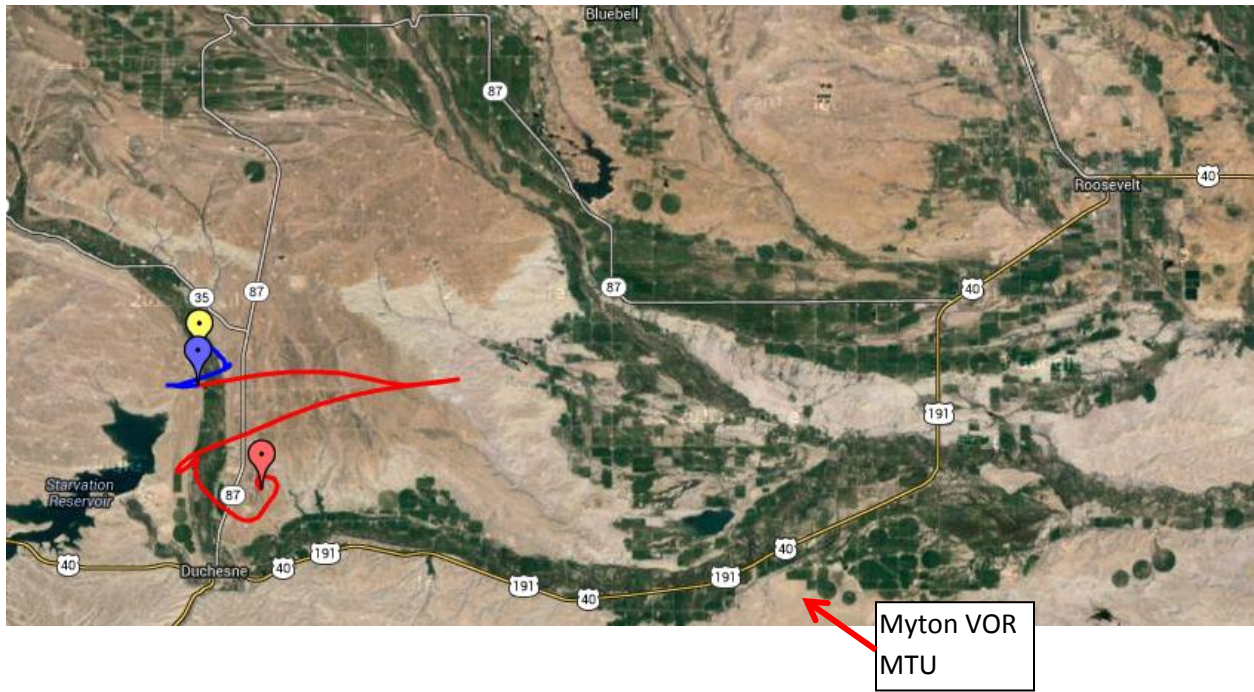
Myton VOR  
MTU

Weber State  
University Physics  
Department  
Prediction  
Software:





University of Michigan Atmospheric Sciences Flight Predictor:



UK High Altitude Society (Cambridge, England) Flight Predictor:

